



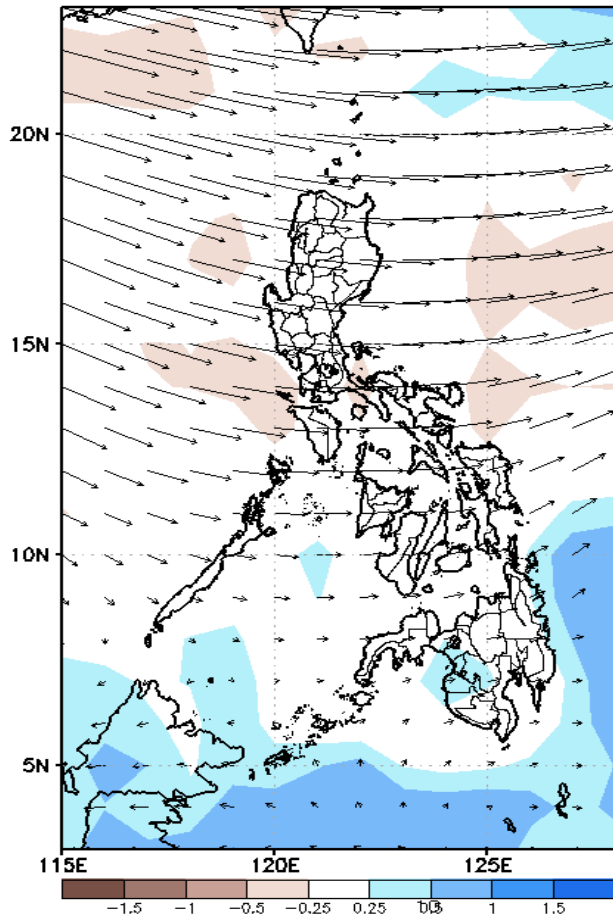
# Week 1 & Week 2 Forecast for the Philippines using GEFS Model



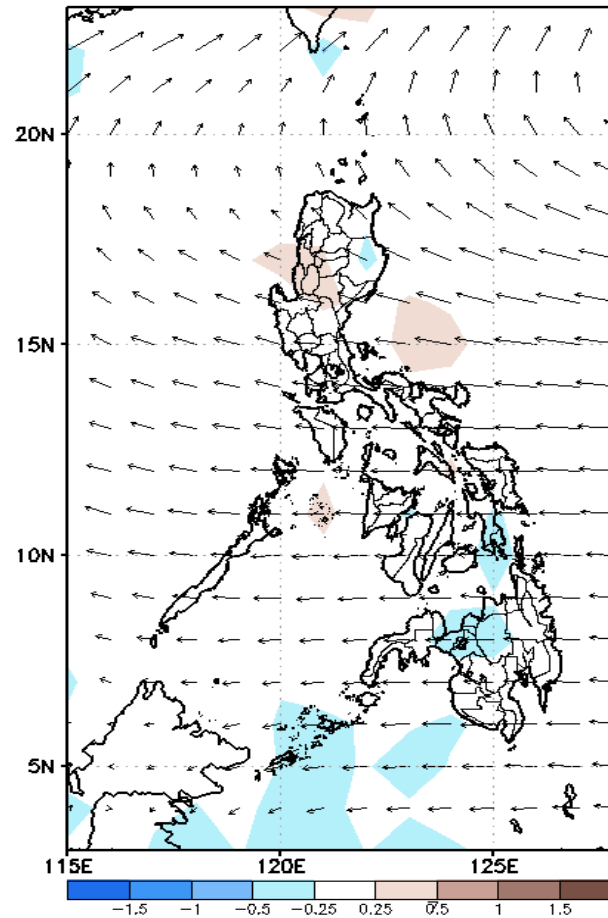
# GEFS Week-1 Forecasts: Divergence & Wind Anomaly

## Week 1: May 06-12, 2022

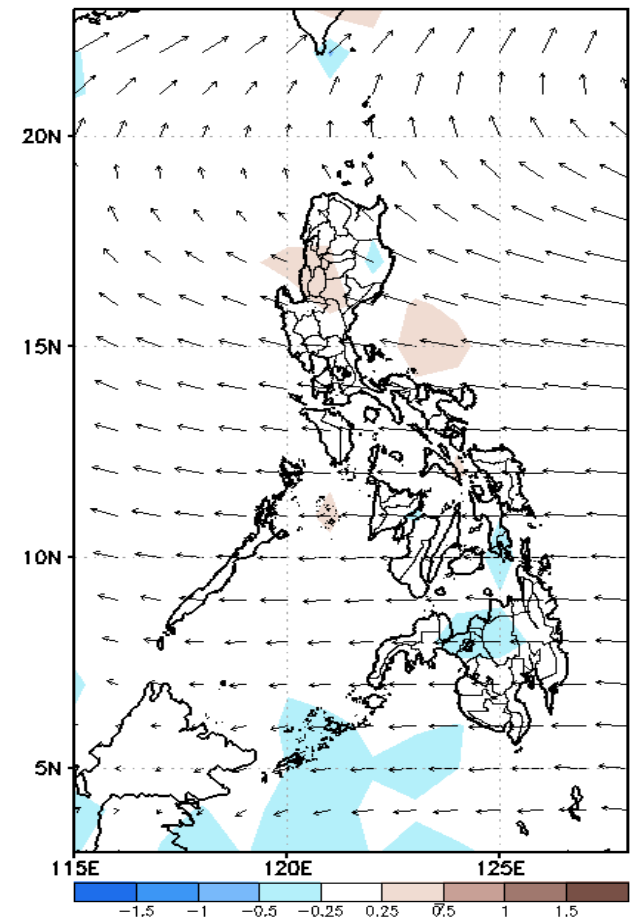
GEFS Week-1 200-hPa Divergence and Wind Anom  
Valid: 20220506 - 20220512



GEFS Week-1 700-hPa Divergence and Wind Anom  
Valid: 20220506 - 20220512



GEFS Week-1 850-hPa Divergence and Wind Anom  
Valid: 20220506 - 20220512

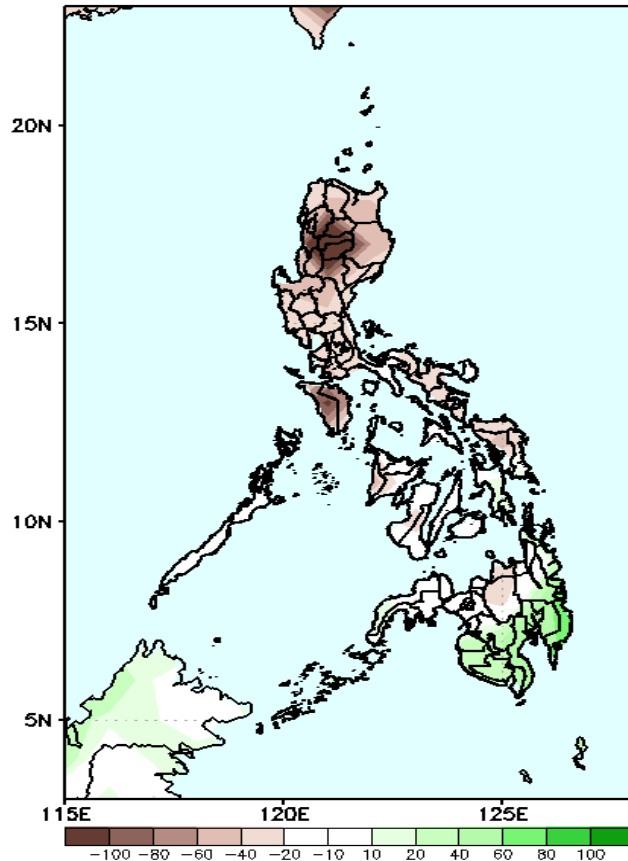


Upper and low level Divergence suggest a likelihood of light precipitation in some areas in Mindanao. Easterlies affecting most parts of the country attributing to warmer temperatures during the forecast period.

# Precipitation Anomaly and Exceedance Probability > 25/50 mm

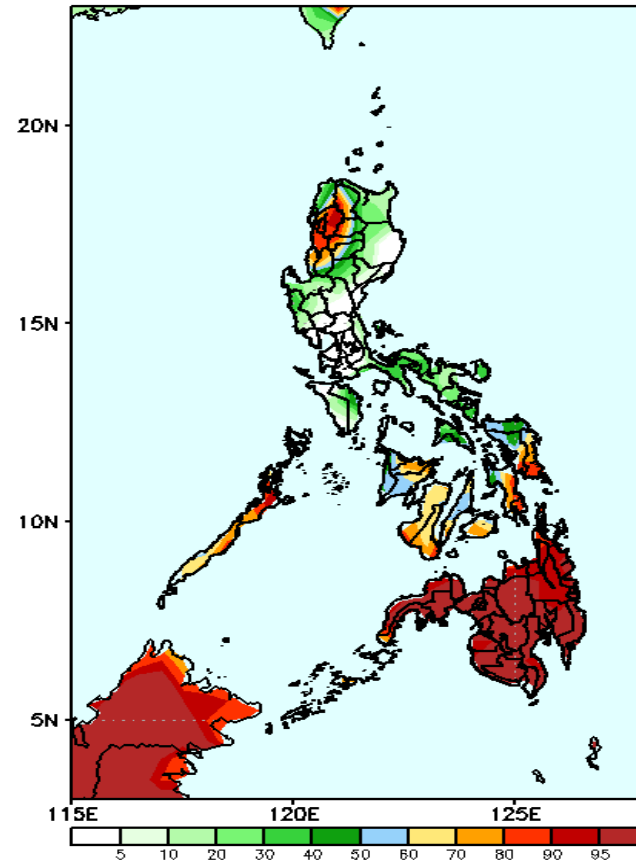
Week 1: May 06-12, 2022

GEFS Week-1 Precip Anomaly  
Valid: 20220506 - 20220512



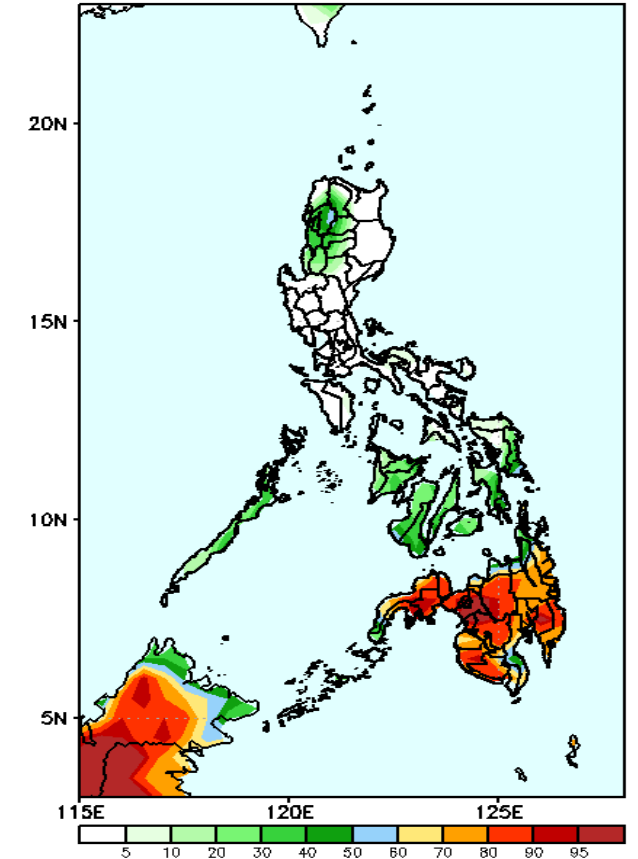
Rainfall deficit of more than 100mm in Cordillera Region & Mindoro and 50-100mm for the rest of the country (except in southern Mindanao where there is 40-50mm increase of rainfall) during the forecast period.

GEFS Week-1 Exceedance Prob. > 25mm  
Valid: 20220506 - 20220512



High probability of rainfall to exceed 25mm in Ilocos Sur , La Union, most parts of Cordillera Region, Palawan, Eastern Samar, Leyte, Bohol, Negros island, Capiz and most of Mindanao while less likely for the rest of the county during the forecast period.

GEFS Week-1 Exceedance Prob. > 50mm  
Valid: 20220506 - 20220512



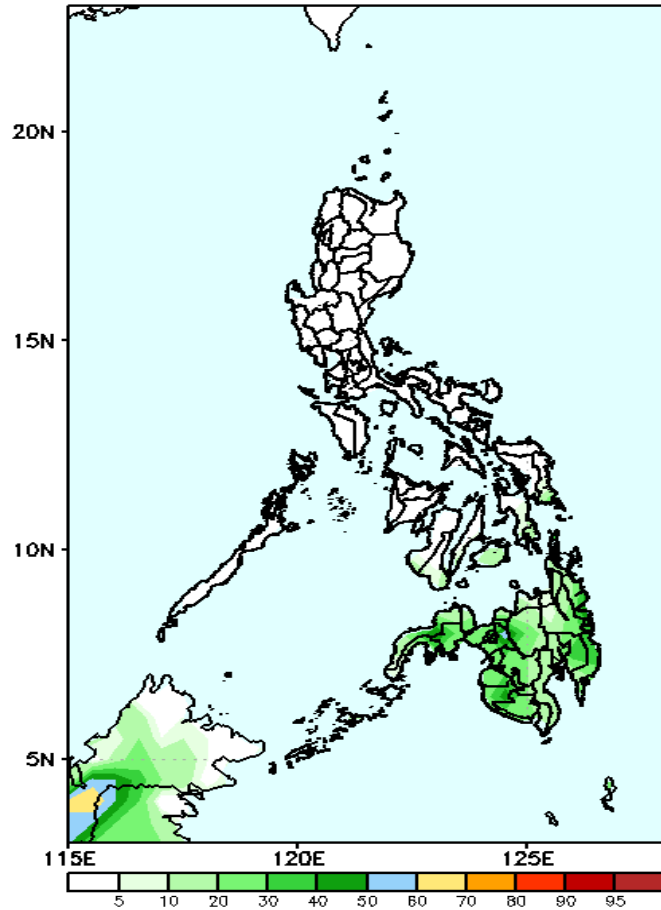
High probability of rainfall to exceed 50mm in most parts of Mindanao while less likely for the rest of the county during the forecast period.



# Exceedance Probability > 100/150/200 mm

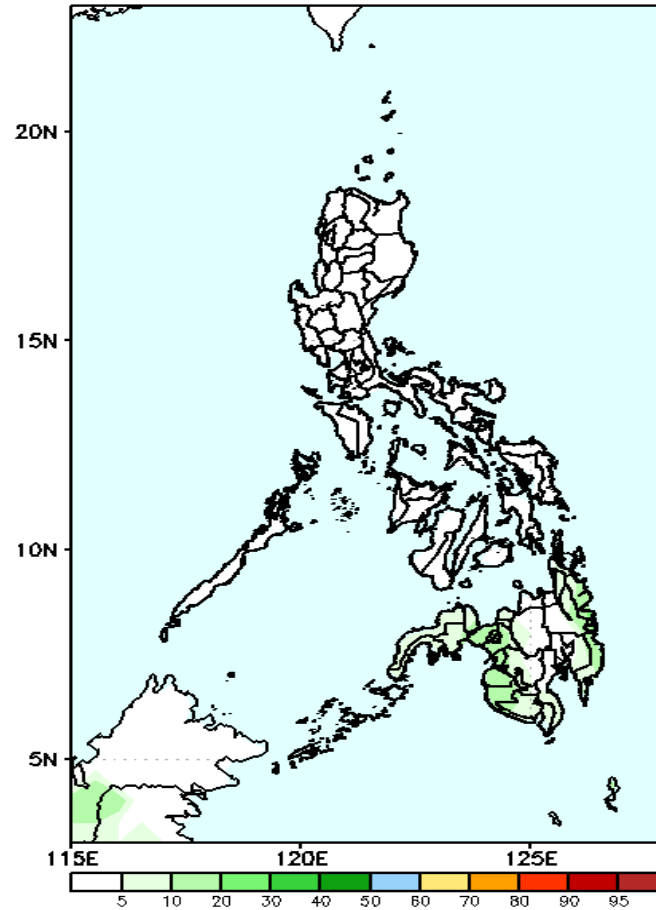
## Week 1: May 06-12, 2022

GEFS Week-1 Exceedance Prob. > 100mm  
Valid: 20220506 - 20220512



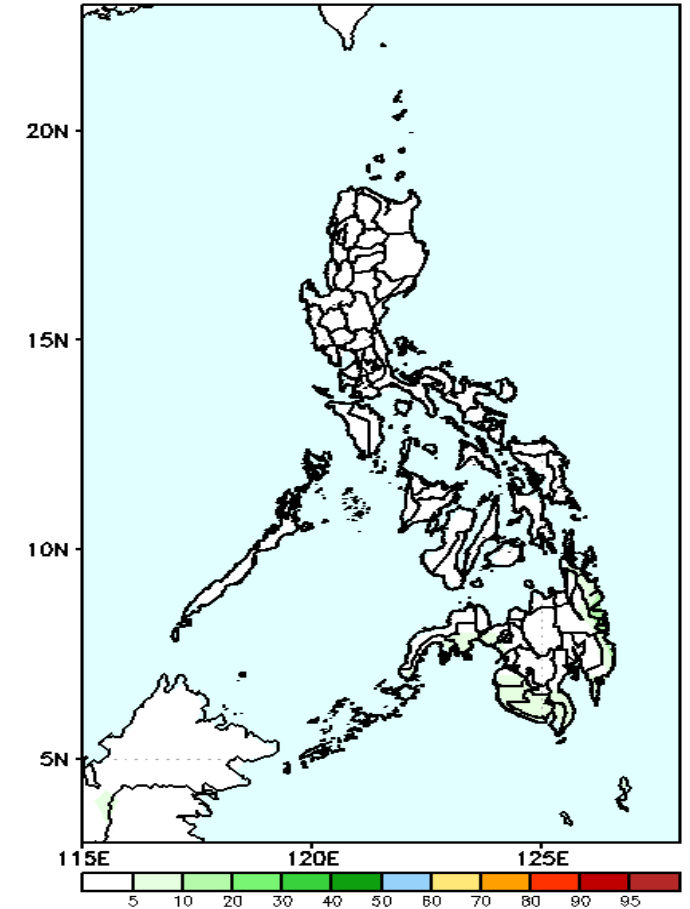
Low probability of rainfall to exceed 100mm in most parts of the country during the forecast period.

GEFS Week-1 Exceedance Prob. > 150mm  
Valid: 20220506 - 20220512



Low probability of rainfall to exceed 150mm in most parts of the country during the forecast period.

GEFS Week-1 Exceedance Prob. > 200mm  
Valid: 20220506 - 20220512



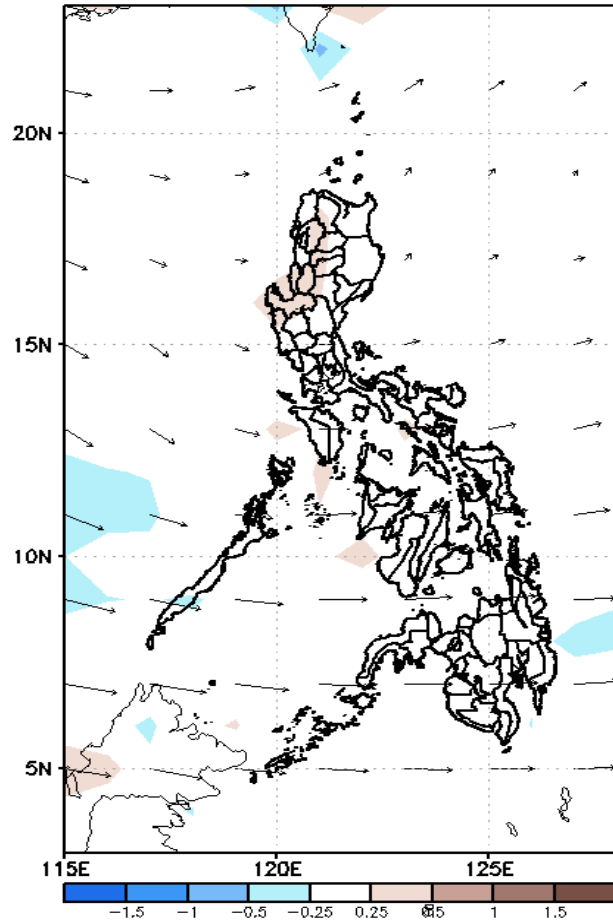
Low probability of rainfall to exceed 200mm in most parts of the country during the forecast period.



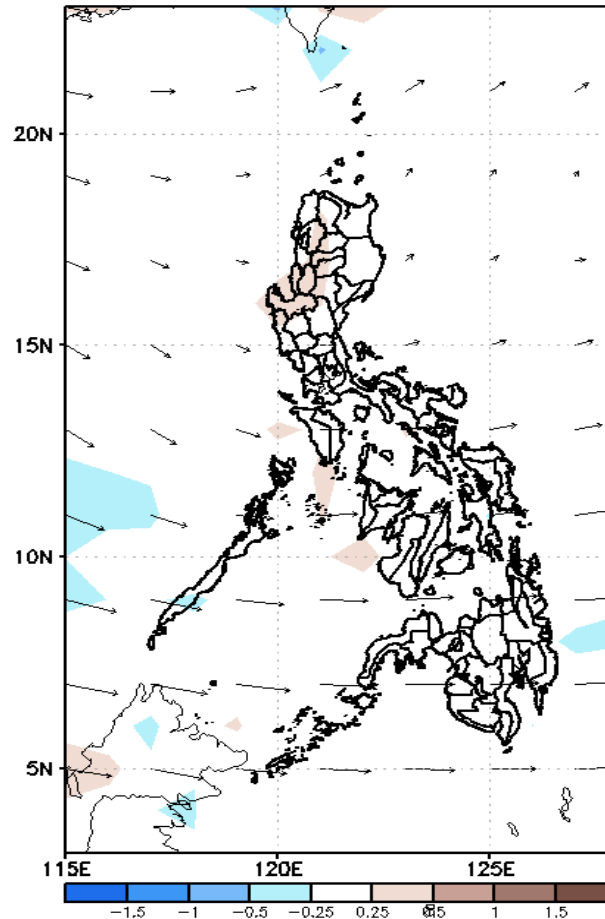
# GEFS Week-2 Forecasts: Divergence & Wind Anomaly

## Week 2: May 13-19, 2022

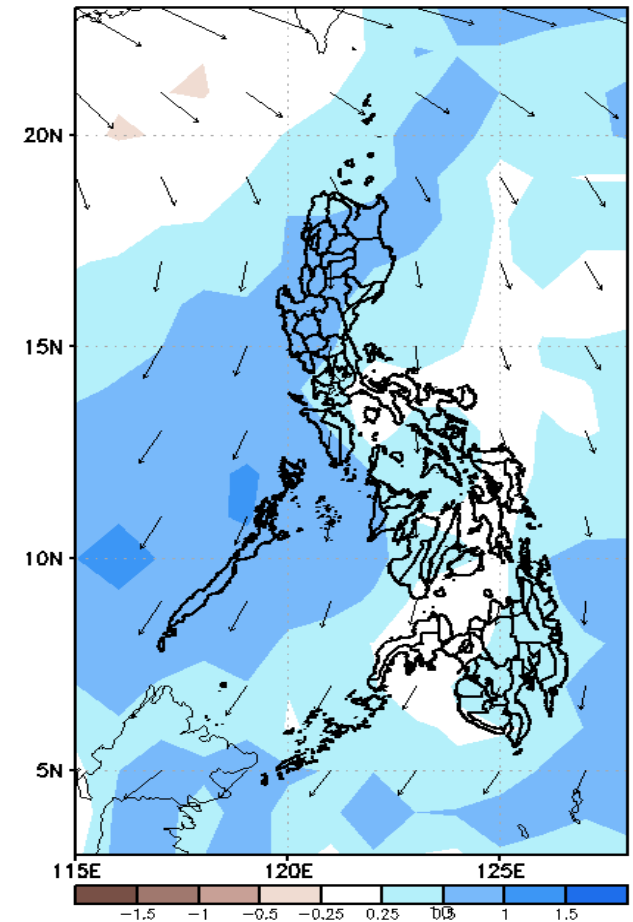
GEFS Week-2 850-hPa Divergence and Wind Anom  
Valid: 20220513 - 20220519



GEFS Week-2 700-hPa Divergence and Wind Anom  
Valid: 20220513 - 20220519



GEFS week-2 200-hPa Divergence and Wind Anom  
Valid: 20220513 - 20220519

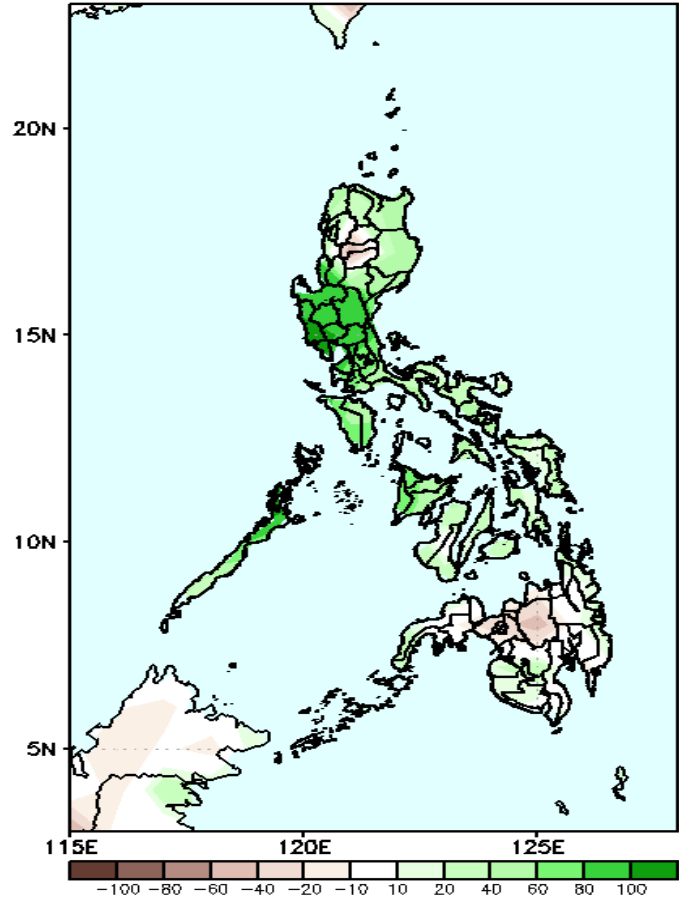


Upper and low level Divergence suggest a likelihood of light precipitation in most parts of the country. Southwest windflow affecting the western sections of Visayas and Mindanao while Easterlies affecting most parts of the country attributing to warmer temperatures during the forecast period.

# Precipitation Anomaly and Exceedance Probability > 25/50 mm

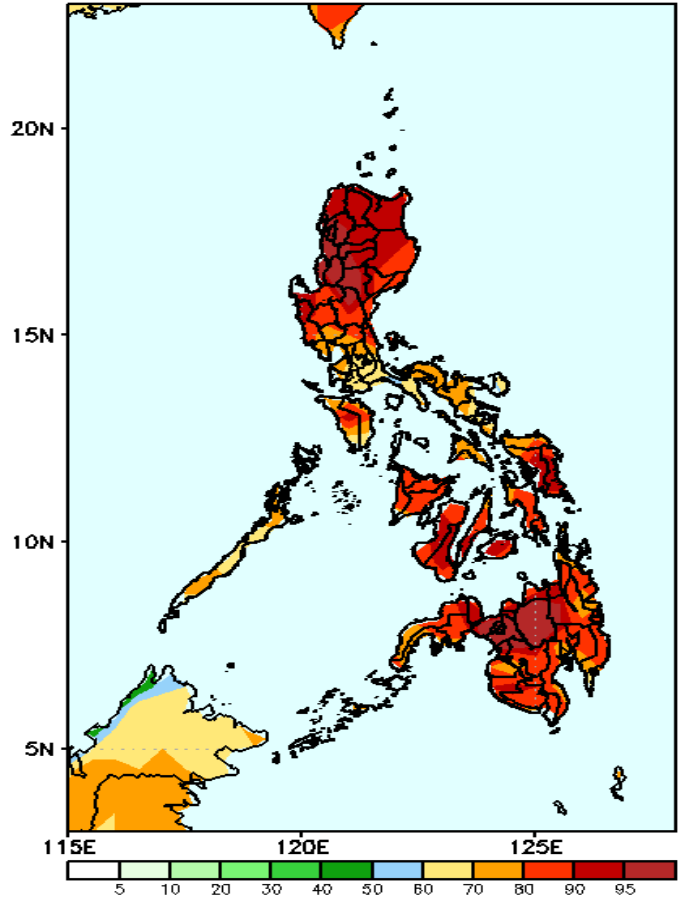
## Week 2: May 13-19, 2022

GEFS Week-2 Precip Anomaly  
Valid: 20220513 - 20220519



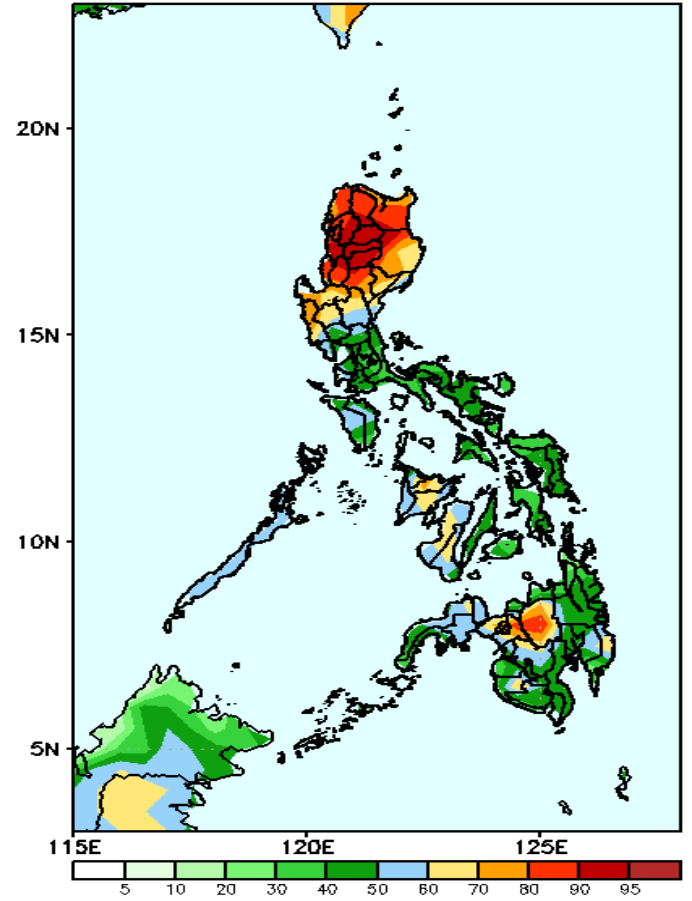
Increase of rainfall of more than 100mm in Pangasinan and Central Luzon and 40-90mm for the rest of Luzon and Visayas while rainfall deficit of 20-40mm in Bukidnod during the forecast period

GEFS Week-2 Exceedance Prob. > 25mm  
Valid: 20220513 - 20220519



High probability of rainfall to exceed 25mm in most parts of the country during the forecast period.

GEFS Week-2 Exceedance Prob. > 50mm  
Valid: 20220513 - 20220519

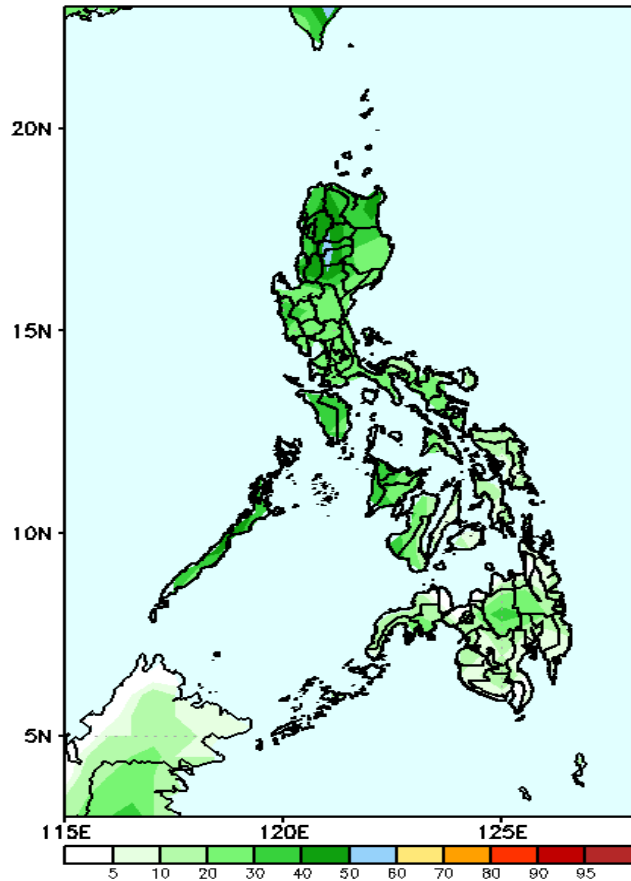


High probability of rainfall to exceed 50mm in Northern & Central Luzon, Bukidnon and some areas in Western Visayas while less likely for the rest of the country during the forecast period

# Exceedance Probability > 100/150/200 mm

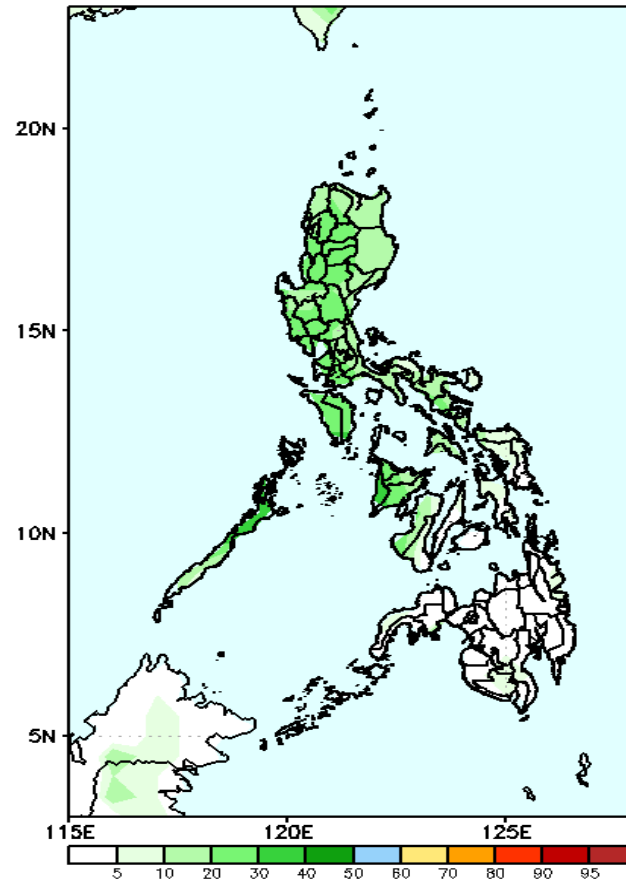
## Week 2: May 13-19, 2022

GEFS Week-2 Exceedance Prob. > 100mm  
Valid: 20220513 - 20220519



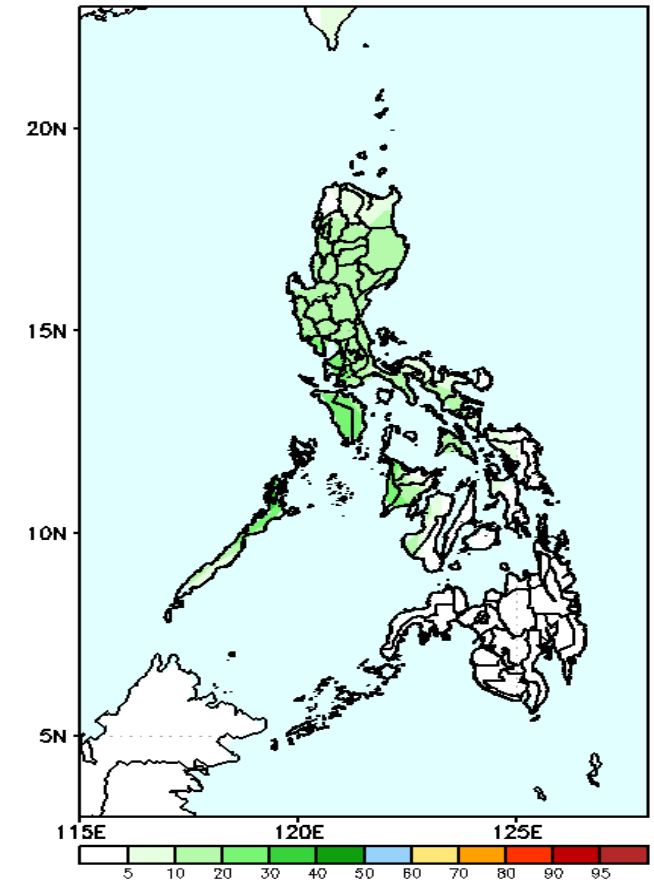
Low probability of rainfall to exceed 100mm in most parts of the country during the forecast period.

GEFS Week-2 Exceedance Prob. > 150mm  
Valid: 20220513 - 20220519



Low probability of rainfall to exceed 150mm in most parts of the country during the forecast period.

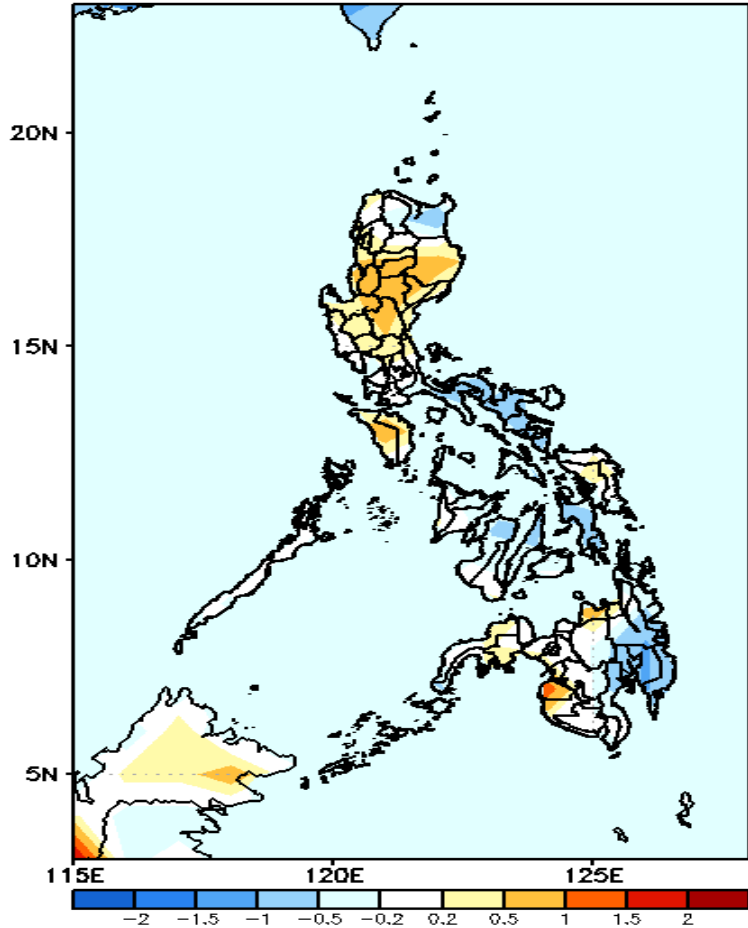
GEFS Week-2 Exceedance Prob. > 200mm  
Valid: 20220513 - 20220519



Low probability of rainfall to exceed 200mm in most parts of the country during the forecast period.

# GEFS Week-1 & 2 Forecasts: T2m Anomaly

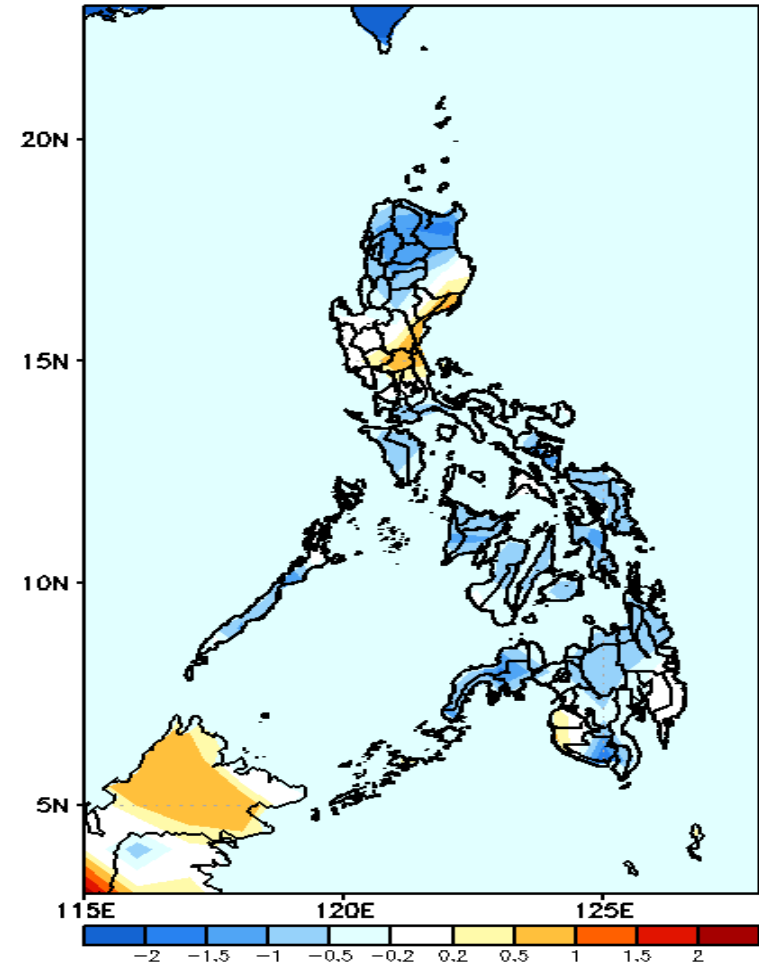
GEFS Week-1 T2m Anomaly  
Valid: 20220506 - 20220512



## 2m Temperature Week 1: May 06-12, 2022

Slightly warmer to warmer than average surface air temperature will likely experience in most parts of Luzon, Samar, Misamis Oriental and western Mindanao while average to slightly cooler for the rest of the country during the forecast period.

GEFS Week-2 T2m Anomaly  
Valid: 20220513 - 20220519



## 2m Temperature Week 2: May 13-19, 2022

Slightly cooler to cooler than average surface air temperature will likely experience in most parts of the country except in Isabela and Central Luzon where average to slightly warmer temperature is expected during the forecast period.